

# “REFLEX”

## Series ‘E’ Motor Shaft Couplings

A three piece shaft coupling having identical flanges with elastomer insert, designed to match motor shaft/power ratings, Small, compact, easy to install

Recommended for motor shaft speeds IE 600 rpm – 3000 rpm

*(Note: For speeds below 500 rpm – select on rated torque)*

### Quick Reference Motor Shaft Coupling Selection

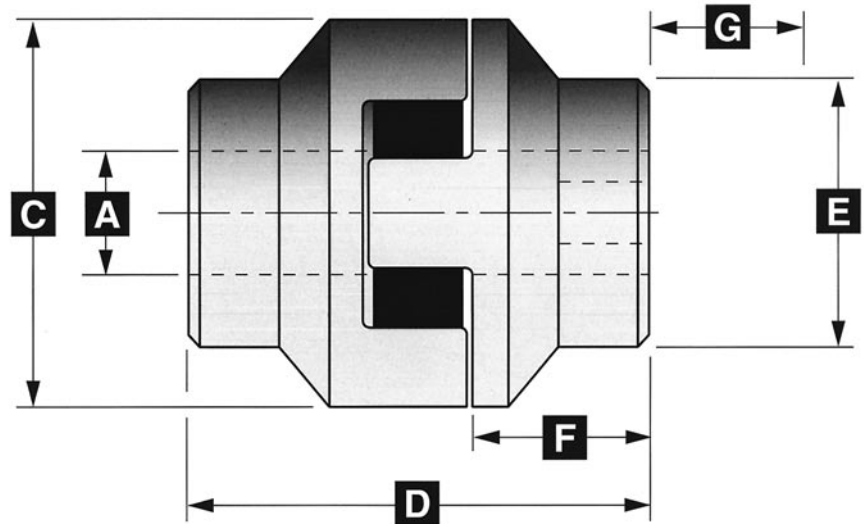
Coupling Size	Motor Frame Size IEC	Max Speed rpm	Running Torque Nm	Rating kW/100 rpm	Motor Power Ratings kW			
					2900 rpm	1450 rpm	970 rpm	725 rpm
EM03	56 63	6000	2.5	0.03	0.12 0.25	0.09 0.18		
EM05	71 80	6000	9.0	0.10	0.55 1.1	0.37 0.75	0.55	
E10	90S 90L 100L 112M	5000	40	0.43	1.5 2.2 3 4	1.1 1.5 3 4	0.75 1.1 1.5 2.2	1.1 1.5
E20	132S 132M	4000	96	1.01	7.5 10	5.5 7.5	3 5.5	2.2 3
E30	160M 160L 180M 180L 200L	3500	238	2.5	15 18.5 22 30 27	11 15 18.5 22 30	7.5 11 11 15 22	5.5 7.5 7.5 11 15
E40	225S 225M	3000	400	4.2	45 45	37 45	22 30	18.5 22
E50	250M	3000	625	6.6	55	55	37	30

These selections are for couplings having sufficient rated power for SF 1.2 and a large enough thru bore capacity to accept the shaft of the motor listed.

# REFLEX Series 'E' Type

## Dimensions

(millimetres)



Coupling Size	Equiv. Shaft Dia. mm	Thru Max Bore mm <b>A</b>	Alignment Limits			Overall Dia Length		Boss Thru Length		Insert Removal	Weight kg
			Parallel mm	Axial mm	Angular degree	<b>C</b>	<b>D</b>	<b>E</b>	<b>F</b>		
EM03	10	12	0.2	0.8	2.0	33.5	38	24	13	12	0.1
EM05	15	20	0.5	1.2	2.0	53	56	40	21	20	0.2
E10	25	29	0.8	1.5	2.0	70	73	55	30	22	1.4
E20	38	38	0.8	2.0	1.5	98	98	70	39	38	3.2
E30	42	50	1.0	2.5	1.5	122	108	84	43	40	5.5
E40	50	63	1.0	3.0	1.5	150	156	100	64	50	11.4
E50	60	70	1.0	3.5	1.5	175	160	114	66	60	16.8

## Material

TYPE 'E' Close Grained Grey Iron  
(BS 1452-1961 Grade 14/17)

TYPE 'EM' Forged magnesium alloy,  
equivalent in strength to Grade  
12 Grey Iron.

## Typical Service Factors

### Even Load (SF = 1.0)

Compressors	-	rotary - uniform load
Conveyors	-	apron belt/screw-uniform load
Dynamometers	-	uniform load
Fans	-	centrifugal - light duty
Generators	-	uniform load
Pumps	-	centrifugal - uniform load
Screens	-	airwashing/water (bar type)

$$\text{kW/100 RPM selection} = \frac{\text{kW} \times 100}{\text{RPM}}$$

Maud Kirk's product range encompasses all possible combinations of Transmission and Conveyor components:

- Speed Reducers
- Variable Speed Belts & Pulleys
- Chain & Sprockets
- Service Centre
- Tabletop & Mat Top Conveyor chain
- Conveyor Components & Bearings
- Shaft Couplings

Visit our website: [www.maudkirk.co.nz](http://www.maudkirk.co.nz)

Email mail to: [sales@maudkirk.co.nz](mailto:sales@maudkirk.co.nz)

Auckland  
09 571 0189

Hamilton  
07 856 8829

Wellington  
04 566 6129

Christchurch  
03 343 3911

